



Lime

# Generation 3.0

## Brake Assembly Replacement

3/1/2019

Central Repair-Lime Technical Institute





# Tools

## List

- 1. T-handle Wrench - Torx T20
- 2. T-handle Wrench - Torx T10
- 3. T-handle Wrench - Torx T25
- 4. T-handle Wrench - Torx T30
- 5. 8mm&14mm wrench



Torx Wrench



T10



Torx Wrench



T20



Torx Wrench



T25



Torx Wrench



T30

5



8mm&14mm wrench

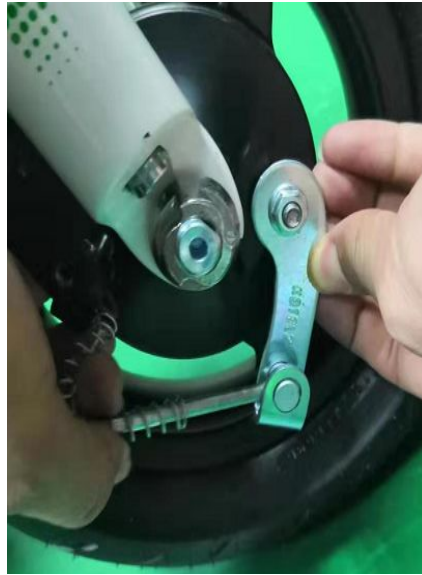
# 3.0 Brake Assembly Disassembly SOP

Technical Guideline

[Video Link](#)

# 1. Disassemble the Brake Linkage

2min



**Tools**

-8mm&14mm wrench

**Part**

(none)

**CAUTION**

## STEP 1

Loosen the screws with 8mm and 14mm open-end wrenches.

## STEP 2

Remove the screws, pull the brake wire out and remove the spring.

## 2. Remove the Brake Lever

30s



**Tools**

-T30 Torx Wrench

**Part**

(none)

**CAUTION**

**STEP 3**

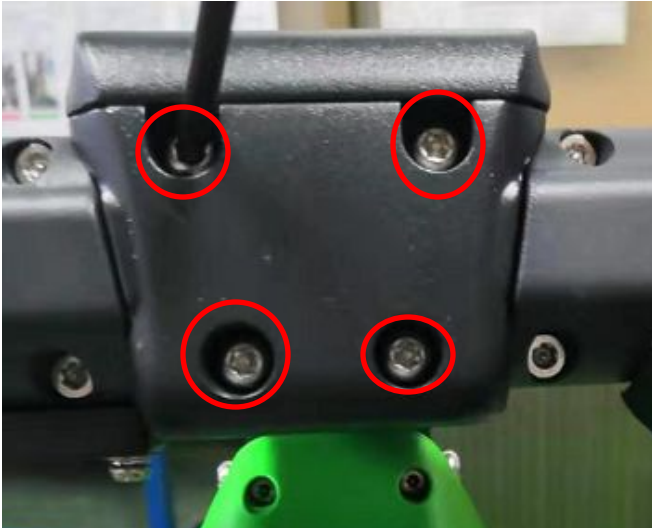
Remove the brake lever screw with a T30 wrench.

**STEP 4**

Remove the brake lever.

### 3. Remove the Handlebar Plate

1min



**Tools**

-T25 Torx Wrench

**Part**

(none)

**CAUTION**

#### STEP 5

Remove the 4 screws that secure the cover with a T25 wrench.

#### STEP 6

Remove the cover.

## 4. Remove the Handlebar Spacer

30s



**Tools**

-T15 Torx Wrench

**Part**

(none)

**CAUTION**

### STEP 7

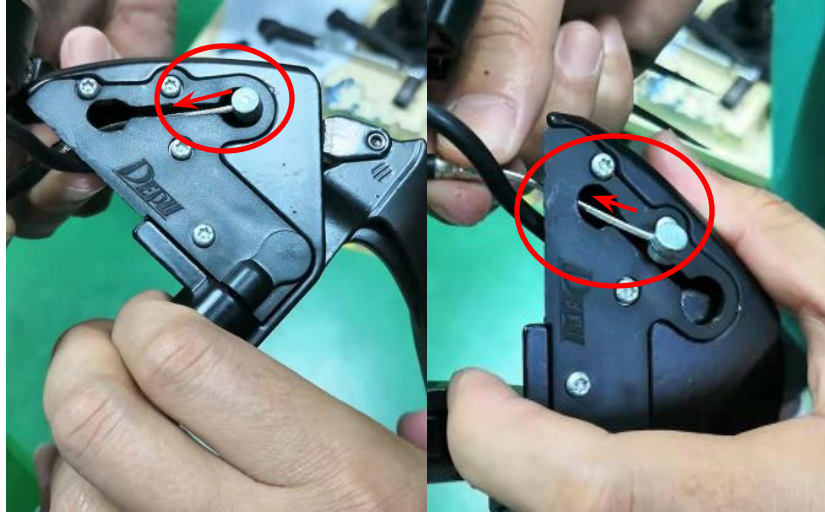
Remove the 4 screws on the handlebar cover with a T15 wrench.

### STEP 8

Remove the cover.

## 5. Detach the Brake Cable End

1min



Tools  
(none)

Part  
(none)

**CAUTION**

### STEP 9

Take the brake wire cable end out through the seating notch.

### STEP 10

Pass the inner end of the brake wire out of the first hole, and then take it out from the second hole.



## 6. Disconnect the Brake Sensor

30s



**Tools**  
(none)

**Part**  
(none)

**CAUTION**

### STEP 11

Unplug the brake wire sensor.

### STEP 12

Remove the brake lever.

# 3.0 Brake Assembly Assembly SOP

Technical Guideline

[Video Link](#)

# 1. Route the Brake Cable through the Brake Lever

1min



## STEP 1

Insert the brake wire from the underside of the handle into the brake lever.



## STEP 2

Pass the brake wire into the first hole and then back into the second hole along the opening.

Tools  
(none)

Part  
(none)

**CAUTION**

## 2. Attach the Brake Cable end to the Brake Lever

1min



Tools  
(none)

Part  
(none)

**CAUTION**

### STEP 3

Pass the brake wire from the inside of the brake lever.

### STEP 4

Snap the brake wire into the brake seat.

### 3. Replace the Handlebar Spacer

1min



Tools  
(none)

Part  
(none)

**CAUTION**

#### STEP 5

Insert the brake wire through the groove of the handlebar spacer.

#### STEP 6

Replace the handlebar spacer.

## 4. Route the Cable through the Handlebar Spacer

1min



Tools  
(none)

Part  
(none)

**CAUTION**

### STEP 7

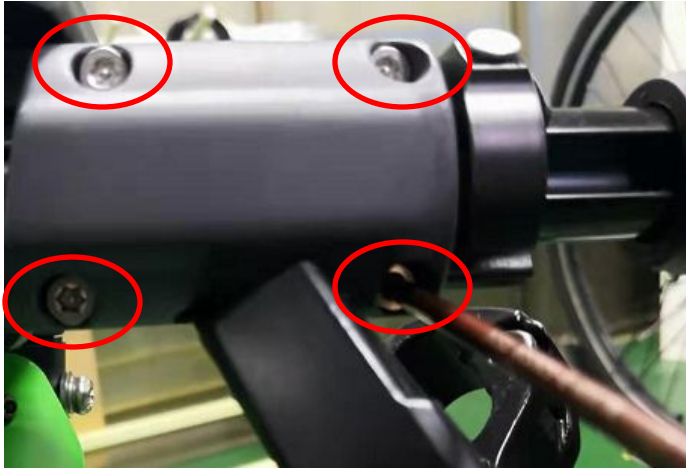
Connect the brake wire terminal, level it into the handle groove, and then pass the brake wire from the front cover groove.

### STEP 8

Close the front and back covers near the bell.

## 5. Secure the Handlebar Spacer Screws

2min



### STEP 9

Tighten the 4 screws on the handlebar spacers with a T15 wrench.



### STEP 10

Position the brake lever against the handlebar spacer. **\*\*\*CAUTION\*\*\***

### Tools

-T15 Torx Wrench

### Part

(none)

### CAUTION

The brake must be flush against the handlebar spacer.

## 6. Replace the Handlebar

2min



### STEP 11

Tighten the brake fixing screw with a T30 wrench.



### STEP 12

Push the handlebars slightly diagonally along the direction of the brake line, to make them fit closely.

### Tools

-T30 Torx Wrench

### Part

(none)

**CAUTION**



## 7. Install the Handlebar Plate

1.5min



Tools  
(none)

Part  
(none)

### CAUTION

Press the handlebar wires into the head to avoid pinching wires.

### STEP 13

Press the handlebar wires into the head as much as possible, to avoid pinching wires.

### STEP 14

Attach the plate to the front of the handlebar (note: the wire fits into the groove of the plate, otherwise the wires will be pinched).

## 8. Tighten the Handlebar Plate

1min



Tools

-T25 Torx Wrench

Part

(none)

**CAUTION**

The cover must be flat, otherwise the wire will be pinched.

STEP 15

Tighten the 4 screws of the cover with a T25 wrench.

\*\*\*CAUTION\*\*\*

Bad example: the front cover of the head is not flat, the wire is pinched.

## 9. Assemble the Brake Line

30s



### STEP 16

Attach the spring to the brake line.



### STEP 17

Put the brake wire into the brake drum arm.

Tools  
(none)

Part  
(none)

**CAUTION**

## 10. Assemble the Brake Line

30s



**Tools**  
(none)

**Part**  
(none)

**CAUTION**

### STEP 18

Push the brake cable end into the brake linkage.

### STEP 19

Replace the 14mm adjustment nut, followed by the 8mm locking nut.

**Remember to quality check & test ride.**

**Wrench On!**