



**Lime**

# **Generation 3.0 Brake Drum Pad Replacement**

**Central Repair-Lime Technical Institute**



## List

1. T-handle Wrench - Torx T25
2. Torque Wrench
3. Spiral Socket Tool
4. 8mm & 14mm Wrench

# Tools

1



Torx Wrench



T25

2



*Torque Wrench\**

3



*Spiral Socket tool*

4



8mm & 14mm  
wrench

# 3.0 Front Wheel Disassembly SOP

Technical Guideline

[Video Link](#)

# 1. Remove the brake assembly.

0.5 min



Tools

8mm & 14mm wrench

Part

(none)

**CAUTION**

(none)

## STEP 1

Loosen the brake cable assembly with 8mm and 14mm open-end wrenches.

## STEP 2

Remove the nuts.

## 2. Remove the brake cable.

0.5 min



Tools  
(none)

Part  
(none)

**CAUTION**  
(none)

### STEP 3

Remove the spring from the brake cable.

### STEP 4

Pull the brake cable from the brake cable stop.

### 3. Remove the sleeve and spiral nuts.

1min



Tools

Spiral socket  
Torque wrench

Part

(none)

**CAUTION**

(none)

#### STEP 5

Remove the brake cable stop sleeve.

#### STEP 6

Use spiral socket to remove the spiral nuts on the left and right sides.

## 4. Remove the front wheel

0.5 min



### STEP 7

Keep the limit washer, spring washer, and spiral nut together.



### STEP 8

Remove the front wheel.

Tools  
(none)

Part  
(none)

**CAUTION**  
(none)

## 5. Remove the brake arm.

0.5 min



Tools

8mm Wrench

Part

**CAUTION**

### STEP 9

Using the 8mm wrench, remove the nut and washer securing the brake drum arm.



## 6. Remove the drum brake

0.5 min



Tools  
(none)

Part  
(none)

**CAUTION**  
(none)

### STEP 10

Remove the brake drum.

## 7. Remove the drum brake pad.

0.5 min



Tools  
(none)

Part  
(none)

**CAUTION**  
(none)

### STEP 12

Pull apart the brake drum pad.

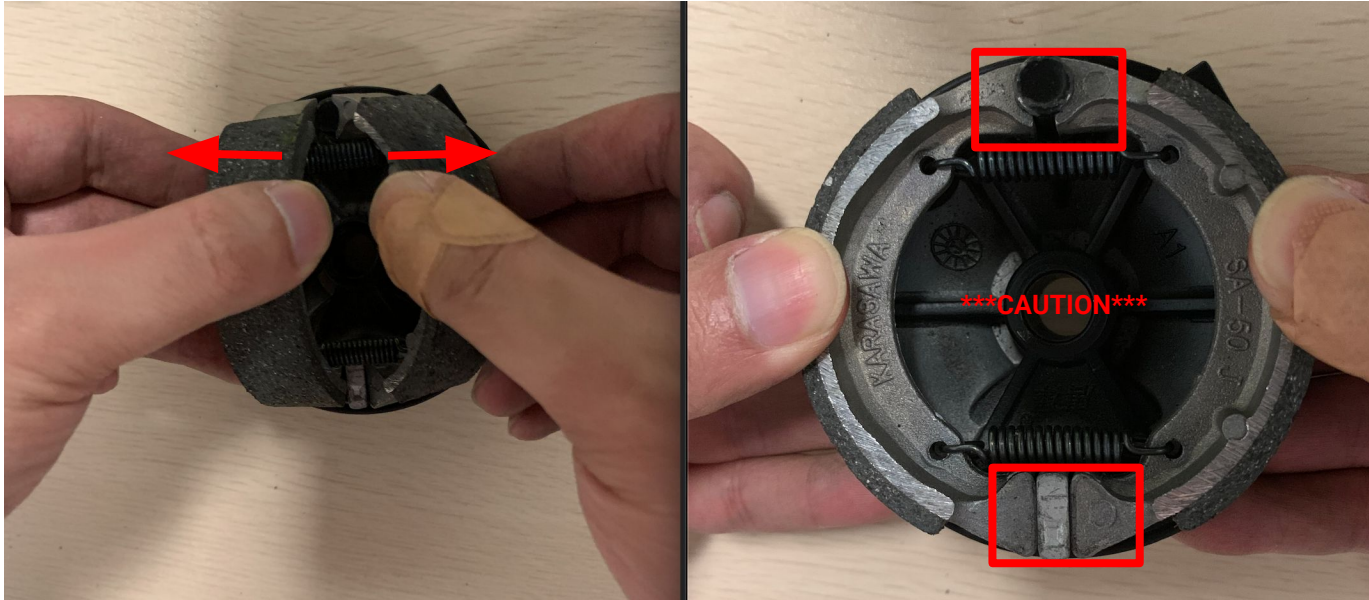
# 3.0 Front Wheel Assembly SOP

Technical Guideline

[Video Link](#)

# 1. Install the drum brake pad.

0.5 min



Tools  
(none)

Part  
Drum brake pad

## CAUTION

Pay attention to the match the shape of the joint, and confirm that the seam is completely fit after installation.

## STEP 1

Place the new drum brake pad onto the drum.

## 2. Install the drum brake.

0.5 min



Tools  
(none)

Part  
Drum brake  
Front wheel

**CAUTION**  
(none)

### STEP 7

Install the new brake drum into the front wheel

### 3. Install the front wheel.

0.5 min



Tools  
(none)

Part  
limit washer  
spring washer  
spiral nut

#### STEP 2

Place the front wheel on the front fork.

#### STEP 3

Gather the limit washer, spring washer, spiral nut.

**CAUTION**  
Make sure the drum  
brake is on the same  
side as the brake  
cable.

## 4. Install the spiral nuts.

1min



### Tools

Spiral socket  
Torque wrench

### Part

limit washer  
spring washer  
spiral nut

**CAUTION**

(none)

### STEP 4

Install the limit washer, spring washer, and spiral nut on the left and right sides of the wheel.

### STEP 5

Use spiral socket tool to tighten the spiral nuts on the left and right side.

## 5. Install the brake cable sleeve.

1min



Tools  
(none)

Part  
brake cable stop sleeve

**CAUTION**  
(none)

### STEP 6

Install the brake cable stop sleeve on to the brake wire.

### STEP 7

Insert the brake cable into the brake cable stop.



## 6. Install the brake cable.

0.5 min



### STEP 8

Slide the spring on to the brake cable.



### STEP 9

Put the brake cable into the brake arm.

Tools  
(none)

Part  
Spring

**CAUTION**  
(none)

## 7. Adjust brake cable.

0.5 min



Tools

8mm & 14mm wrench

Part

8mm & 14mm nuts

**CAUTION**

(none)

**STEP 10**

Tighten the 14mm and 8mm nut on the brake assembly.

**Remember to quality check & test ride.**

**Wrench On!**