



Lime

Generation 3.0 Display Replacement

3/1st/2019

Central Repair-Lime Technical Institute





Tools

List

- 1. T-handle Wrench - Torx
T10
- 2. T-handle Wrench - Torx
T20
- 3. T-handle Wrench - Torx
T25
- 4. T-handle Wrench - Torx
T30
- 5. Wrenches
8mm&14mm

1



Torx Wrench



T10

3



Torx Wrench



T25

4



Torx Wrench



T30



8mm&14mm One-open
Wrenches

3.0 Display Disassembly SOP

Technical Guideline

[Video Link](#)

1. Loosen the Brakes

30s



Tools

-8mm&14mm wrench

Part

(none)

CAUTION

(none)

STEP 1

Loosen the screws with 8mm and 14mm open-end wrenches.

STEP 2

Remove the screws.

2. Remove the Front Brake Panel

30s



Tools

-T25 Torx Wrench

Part

(none)

CAUTION

STEP 3

Remove the 3 screws on the brake panel with a T25 wrench.

STEP 4

Remove the brake panel.

3. Free the Brake Cable

30s



Tools

-Cutters

Part

(none)

CAUTION

STEP 5

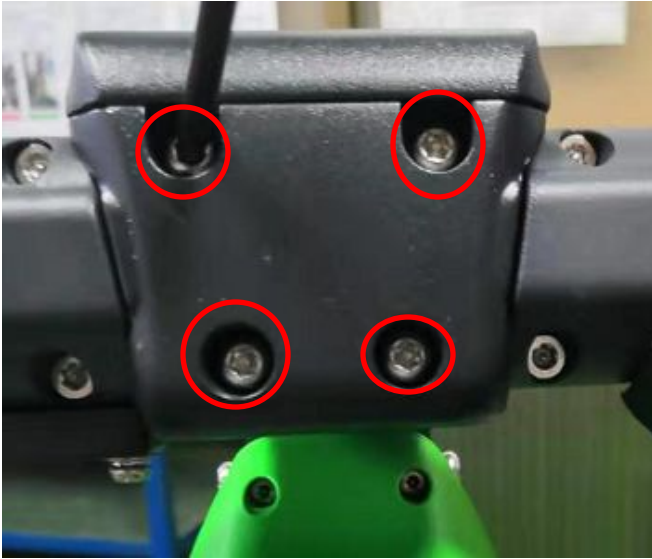
Remove the spring from the brake line.

STEP 6

Cut off the zip tie.

4. Remove the Handlebar Plate and Display Screws

1min



Tools

- T25 Torx Wrench
- T10 Torx Wrench or Phillips Screwdriver

Part

(none)

CAUTION

STEP 7

Remove the four screws that fix the handlebar plate with a T25 Wrench.

STEP 8

Remove the two screws underneath the display with a T10 wrench or a phillips screwdriver.

5. Remove the Head

30s



Tools

-T30 Torx Wrench

Part

(none)

CAUTION

STEP 9

Remove the 4 screws with a T30 Wrench.

STEP 10

Pull out the head.

6. Remove the Display

30s



Tools

-2.5 Hex Wrench or
T10 Torx Wrench

Part

(none)

CAUTION

STEP 11

Remove the 1 screw at the bottom of the head holding the display, using either a T10 Torx Wrench or a 2.5mm Hex Wrench.

STEP 12

Use the tool to push the display out from the bottom up.

7. Disconnect the Display

30s



Tools
(none)

Part
(none)

CAUTION

STEP 13

Open the display and unplug the connection

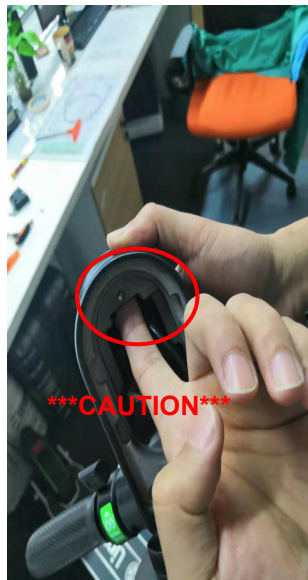
3.0 Display Assembly SOP

Technical Guideline

[Video Link](#)

1. Reinstall the Status LED

2min



Tools

-T10 Torx Wrench or
2.5mm Hex Wrench

Part

-Working Status LED

STEP 1

Route the LED wire through the hole.

STEP 2

First connect the wire terminal, then use a T10 or 2.5mm hex wrench to insert a screw at the bottom of the display into the screw hole.

CAUTION

The screw is hard to insert the hole, try to insert the screw from top of the head part, as shown in the pic.

2. Replace the Display Screws

1-3min



Tools

- T10 Torx Wrench or 2.5mm Hex Wrench
- Phillips Screwdriver

Part

(none)

CAUTION

STEP 3

Arrange the wire to the display and tighten with a T10 wrench or 2.5mm hex wrench.

STEP 4

Tighten the 2 screws of the display with a phillips screwdriver.

3. Place the Head into the Neck

30s



STEP 5
Arrange the wires well. Don't leave them too long to avoid pressing the wires while loading the head.



STEP 6
Insert the head into the neck tube.

Tools
(none)

Part
(none)

CAUTION
Be careful not to pinch the wires when fitting the head into the neck.

4. Secure the Head

1min



Tools

-T30 Torx Wrench

Part

(none)

CAUTION

STEP 7

Tighten the 4 screws that fix the head with a T30 Wrench.

STEP 8

First push the brake wire back into the hole, then line up the handlebar against the head.

5. Install the Handlebar Plate

1min



Tools
(none)

Part
(none)

CAUTION
Press the handlebar
wires into the head to
avoid pinching wires.

STEP 9

Press the handlebar wires into the head as much as possible, to avoid pinching wires.

STEP 10

Attach the plate to the front of the handlebar (note: the wire fits into the groove of the plate, otherwise the wires will be pinched).

6. Pay Special Attention to the Handlebar Plate Fitting

1min



Tools
(none)

Part
(none)

CAUTION

The right picture shows the incorrect method: the front cover of the goose head is not flat, the wires are pressed.

STEP 11
The cover must be flat, otherwise the wires will be pressed.

*****CAUTION*****

7. Secure Handlebar Plate Screws and Begin Brake Assembly

1min



STEP 12

Tighten the four screws handlebar plate with a T25 Wrench.



STEP 13

Attach the spring onto the brake line.

Tools

-T25 Torx Wrench

Part

(none)

CAUTION

8. Assemble the Brake Line

1min



Tools
(none)

Part
(none)

CAUTION

STEP 14

Push the brake line into the brake linkage.

STEP 15

Replace the 14mm adjustment nut, followed by the 8mm locking nut.

9. Zip Tie the Brake Line

30s



STEP 16

Fix the brake line with a zip tie.



STEP 17

Cut off the end off the zip tie.

Tools

-Cutters

Part

-Zip Tie

CAUTION

10. Reinstall the Brake Panel

1min



Tools

-T25 Torx Wrench

Part

(none)

CAUTION

STEP 18

Install the brake panel underneath the fender.

STEP 19

Use a T25 wrench to secure the 3 screws holding the brake panel.

Remember to quality check & test ride.

Wrench On!