



Lime

Generation 3.0

Motor Control Replacement

3/1/2019

Central Repair-Lime Technical Institute





List

1. T-handle Wrench - Torx
T20
2. T-handle Wrench - Torx
T10
3. 6mm Hex Wrench

Tools

1



Torx Wrench

T20

2



Torx Wrench

T10

3



6mm hex
Wrench

3.0 Motor Control Disassembly SOP

Technical Guideline

[Video Link](#)

1. Remove the Screws

1min



Tools

- T10 Torx Wrench
- T20 Torx Wrench

Part

(none)

CAUTION

STEP 1

Remove the 3 screws with a T20 wrench.

STEP 2

Use a T10 wrench to loosen the 3 screws on the joint cover and remove the protective cover.

2. Separate the Joint

30s



Tools

-6mm hex wrench

Part

(none)

CAUTION

STEP 3

Remove the two screws holding the joint with a 6mm hex wrench.

STEP 4

Separate the Joint. (use a flathead screwdriver to insert the slot to pry the joint apart)

3. Unplug Joint Connectors and Remove Bottom Cover

30s



Tools

-T20 Torx Wrench

Part

(none)

CAUTION

STEP 5

Unplug the connectors to the motor controller inside the joint.

STEP 6

Remove the four screws on the protective cover with a T20 wrench.

4. Disconnect the Motor Cable

2min



STEP 7

Remove the 11 screws on the bottom plate with a T20 wrench.



STEP 8

Unplug the motor and brake light light connectors.

Tools

-T20 Torx Wrench

Part

(none)

CAUTION

5. Remove the Motor Controller

30s



STEP 9

Disconnect the connectors to the motor controller.



STEP 10

Pull out the motor controller.

Tools
(none)

Part
(none)

CAUTION

3.0 Motor Control Assembly SOP

Technical Guideline

[Video Link](#)

1. Reconnect the Good Motor Controller

1min



Tools

-T20 Torx Wrench

Part

-Working Motor Controller

CAUTION

STEP 1

Insert the motor controller into the joint.

STEP 2

Use a T20 wrench to tighten the 3 screws that secure the motor controller to the frame.

2. Connect the Joint

30s



STEP 3

Pull any slack in the cables upwards into the tube and down into the tube.



STEP 4

Install the joint.

CAUTION

Tools
(none)

Part
(none)

CAUTION

Do not pinch the wires.

3. Secure the Joint

3min



Tools

- 6mm hex wrench
- T10 Torx Wrench

Part

(none)

CAUTION

STEP 5

Use a 6mm hex wrench to tighten the two screws holding the joint.

STEP 6

Tighten the 3 screws of the joint cover with a T10 wrench.

4. Connect the Motor Cables

30s



STEP 7

Connect the terminals of motor and brake light.



STEP 8

Connect the motor controller terminals.

Tools
(none)

Part
(none)

CAUTION

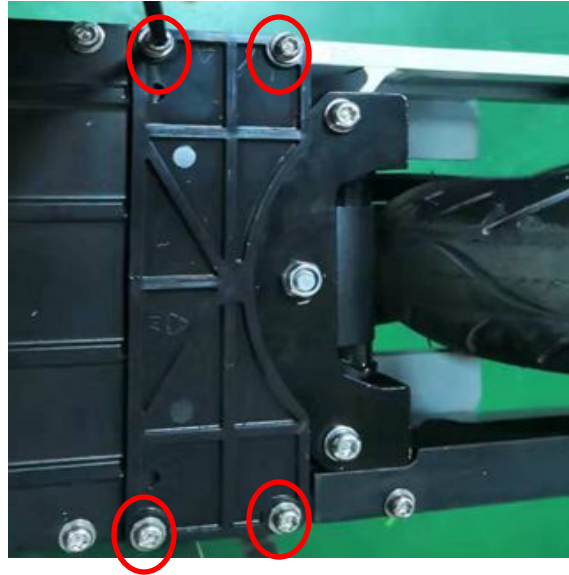
5. Replace the Bottom Covers

2min



STEP 9

Tighten the 11 screws on the bottom plate with a T20 wrench.



STEP 10

Tighten the four screws on the protective cover with a T20 wrench.

Tools

-T20 Torx Wrench

Part

(none)

CAUTION

Remember to quality check & test ride.

Wrench On!